

MICRO SWITCH

A DIVISION OF MINNEAPOLIS-HONEYWELL REGULATOR COMPANY
FED. MFR. CODE 91929

SWITCH — BASIC

CATALOG LISTING
BA-2RQ1-A2

FORMTEK
DRAWN
R. E. R. 2 MAR 59

CHECK
K.F.M. 3 MAR 59

REPLACES
(M) BA-2RQ1-A2
ISSUE 5

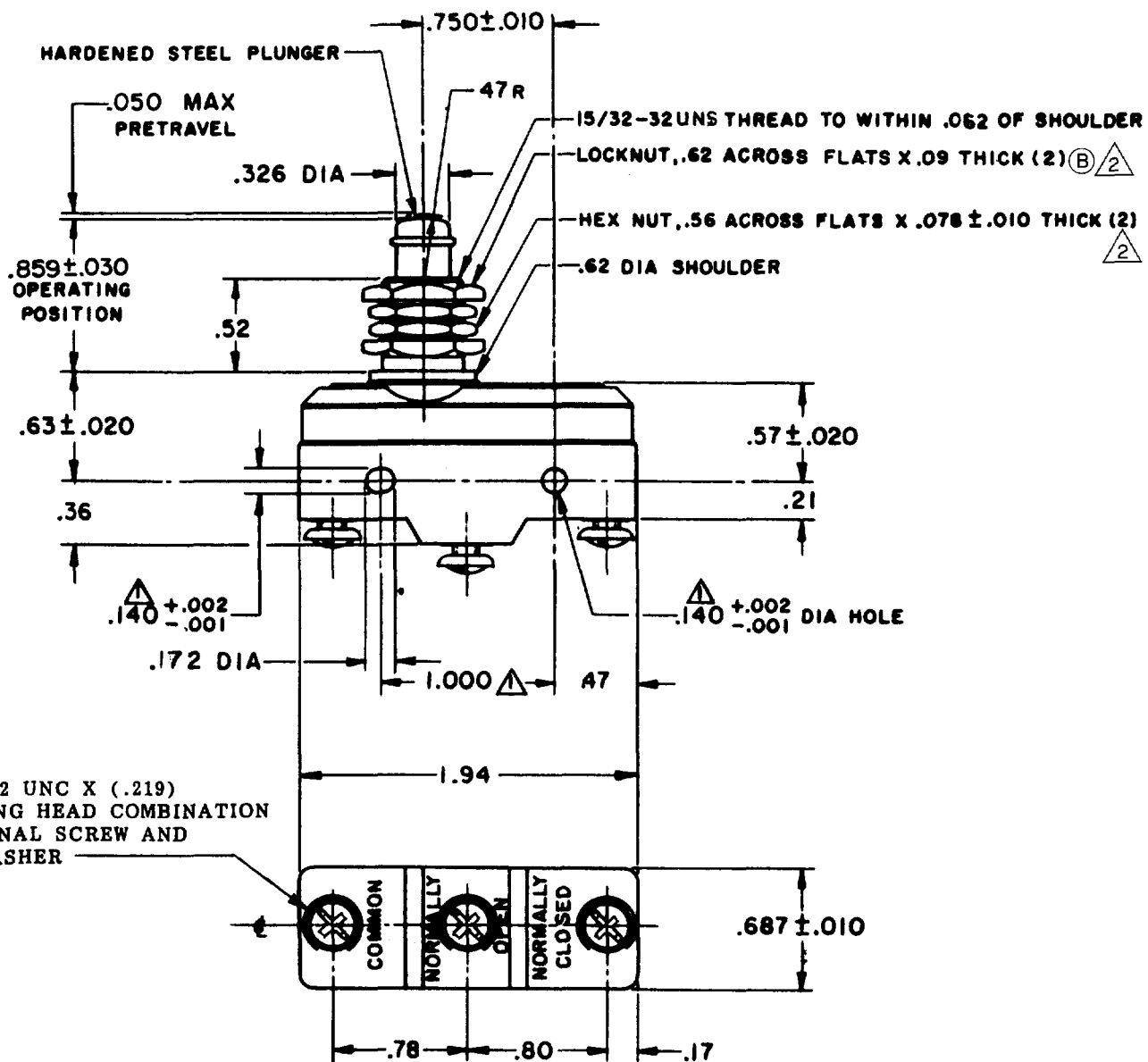
RELEASE NO.

DRAWING NUMBER
M BA-2RQ1-A2
PAGE 1 OF 1

ISSUE
14

REVISIONS

A	CO 9600	R. E. R.	MAR 59
B	CO14866	J. D.	AUG 60
C	CO27518	L. S. O.	JUN 70
D	CO57732	K. P.	NOV 78
E	CO 49448	J. C. O.	FEB 79
F	CO-73287-J	J. A. L.	NOV 93
G	CO 77590	S. A. D.	JUN 94
H	CO-82133	CSL	JUL 96
J	CO93346	D. L. T.	SEP 98



3X 6-32 UNC X (.219)
BINDING HEAD COMBINATION
TERMINAL SCREW AND
CUPWASHER

- NOTES
- ① MOUNTING HOLES WILL ACCEPT PINS OR SCREWS OF .139 MAX DIA ON 1.000±.002 CENTERS
 - ② HARDWARE FURNISHED UNASSEMBLED

THIS DRAWING COVERS A PROPRIETARY ITEM AND IS THE PROPERTY OF MICRO SWITCH, A DIVISION OF MINNEAPOLIS-HONEYWELL REGULATOR CO. THIS DRAWING IS NOT TO BE COPIED OR USED WITHOUT THE APPROVAL OF MICRO SWITCH.

CHARACTERISTICS	ELECTRICAL DATA	SCALE FULL
OPERATING FORCE-----14--22 OZ	CONTACT ARRANGEMENT S P D T	DO NOT SCALE PRINT
RELEASE FORCE-----10 OZ MIN	UL LISTED - FILE E12252 20A-125, 250 OR 480 VAC; 10A-125 VAC "L" 1 1/2HP-125 VAC; 2HP-250 VAC	UNLESS OTHERWISE SPECIFIED DIMENSIONS ARE IN INCHES
DIFFERENTIAL TRAVEL-----.002-.0075	CODE L97 1/2A-125 VDC; 1/4A-250 VDC	TOLERANCES ARE:
OVERTRAVEL-----.219 MIN	L288 L299 L308 20(3)A 250V ~ T85 5E4	ONE PLACE (.0) ±.000 TWO PLACE (.00) ±.010 THREE PLACE (.000) ±.005 ANGLES ±
		WEIGHT .093 LB